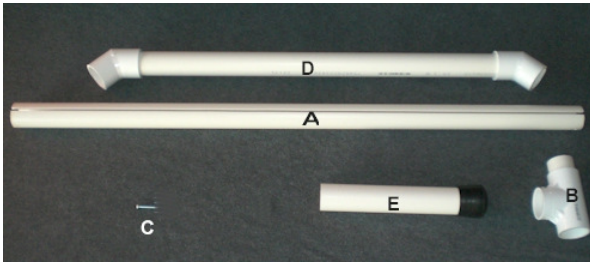


### Part List

- Part A Qty 2 (Bed Heads Rails)
- Part B Qty 4 (Elbows with connector)
- Part C Qty 4 (1/4-20 x 2 1/2" & Nuts) or (#15 3/4" Screws)
- Part D Qty 2 (Bed Side Rails)
- Part E Qty 6 Legs and Vinyl feet
- May include four or more small tubes.

### Picture of Parts



### (For standard mat skip this step)

**Step One:** Place Mat on flat surface with sleeves facing up. Insert long tubes in to long sleeve of mat and short tubes in to short sleeve. Some tubes may already be inserted.



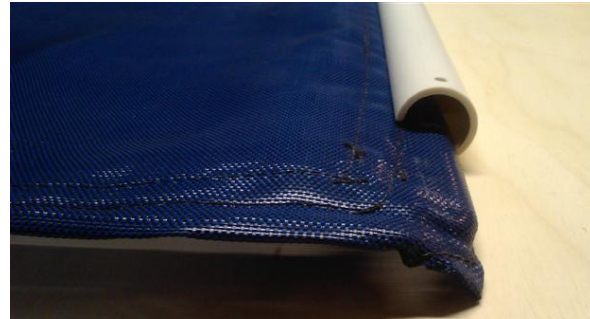
### Step Two:

- a. Turn mat over.
- b. Then slide Part A with **black letter facing down** on to long ends of Mat.

### Standard Mat



### Other Fabric Mat



### Step Two:

- a. Connect part B on to part A with connector down.
- b. Screw in one screw on the top and the other on the bottom.
- c. Repeat on all four corners.

***If using a power screw driver be careful not to over tighten.***



**Step Four:** Lay out mat as shown. With both D parts along side as shown.



**Step Five:** Connect part D part B together like shown below. Do this on all four sides.

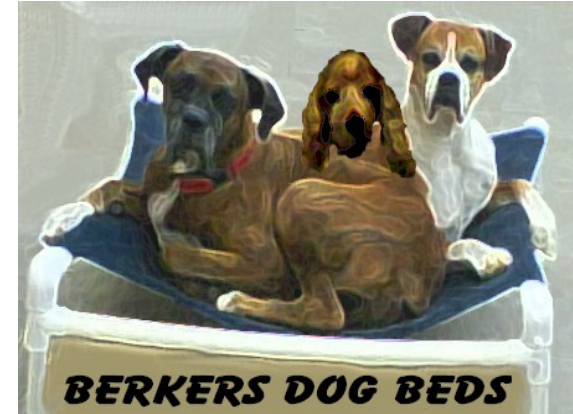


**Step Five:** Place legs in to Part B with black lettering facing the center inside of the bed. As shown below.



## **Berker's Dog Beds**

**Buddy Only**



**[www.BerkersDogBeds.Com](http://www.BerkersDogBeds.Com)**

**Because every dog deserves a bed!**

**How to put together your Buddy III dog bed.**

**See our how to Video's at  
[www.youtube.com/berkersdogbeds](http://www.youtube.com/berkersdogbeds)**

**Email: [info@Berkersdogbeds.com](mailto:info@Berkersdogbeds.com)**